

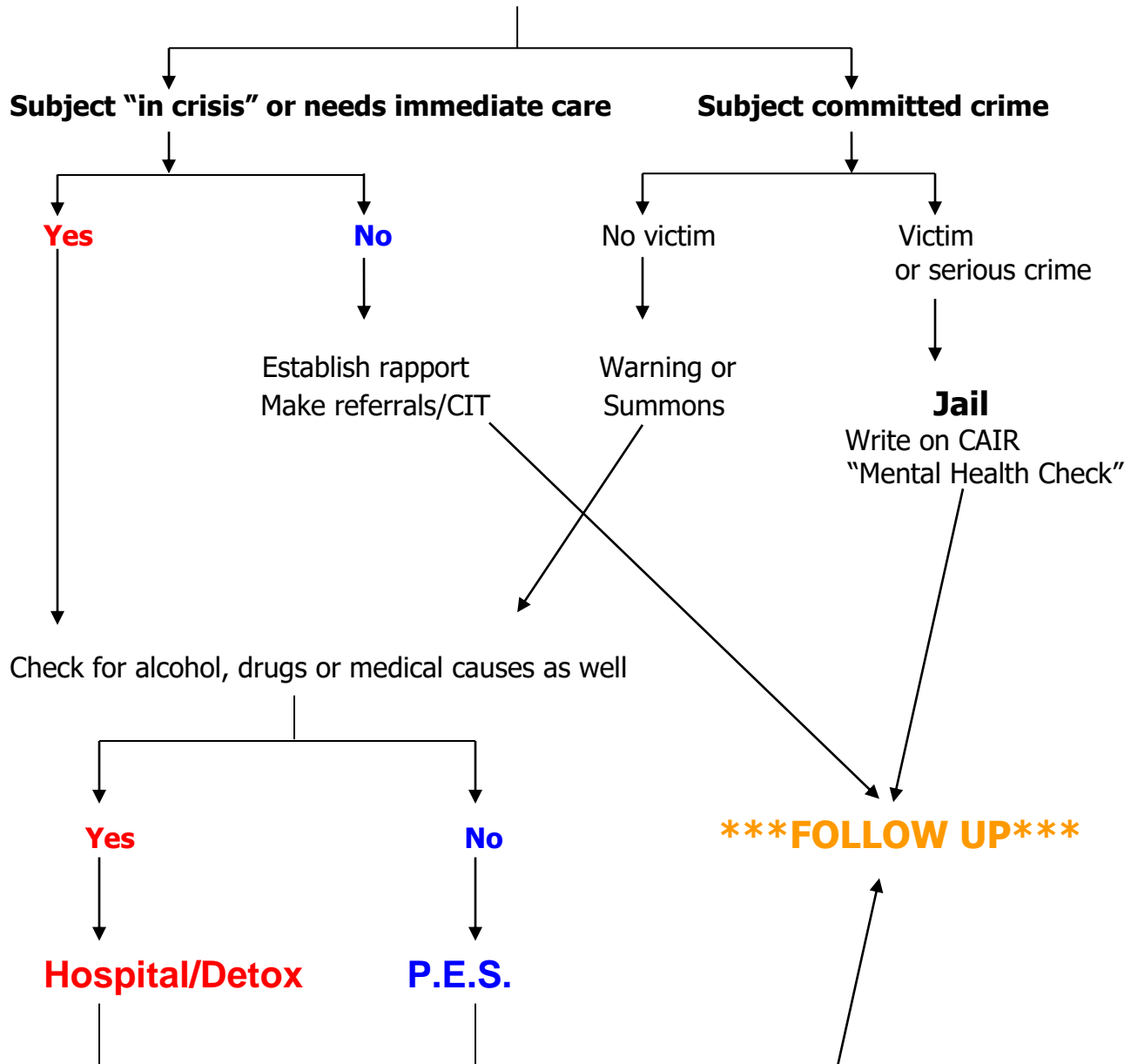
PATROL RESPONSE FOR THE MENTALLY ILL

(Cheat Sheet)

Establish Mental Illness

BASED UPON:

- Nature of call/outside sources/training
- Subject's behavior, communication and orientation
- Check for possible drug/alcohol and medical causes
- Ask if under treatment or medical care/on medication/have caseworker



***This is a just a rough guide to an infinite number of circumstances that might arise.
Officer discretion and judgment always comes first.***